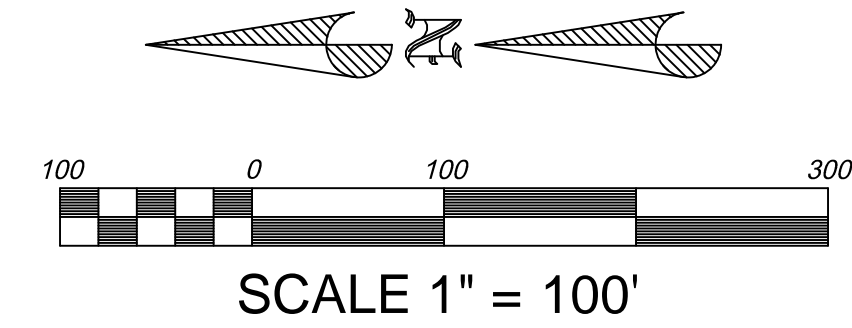


RIDGES AT ROSE CANYON

SITE PLAN



WILDING
ENGINEERING

14721 SOUTH HERITAGE CREST WAY
BLUFFDALE, UTAH 84065
801.553.8112
WWW.WILDINGENGINEERING.COM

DRAWING NOTES:

SITE BENCHMARK: BRASS CAP MONUMENT AT THE SOUTHEAST CORNER OF SECTION 4, T4S, R2W, SLB&M. ELEVATION: 5278.10

THE BASIS OF BEARING FOR THIS PROJECT IS SOUTH 89°54'46" WEST BETWEEN THE FOUND SOUTHEAST CORNER SECTION MONUMENT AND THE SOUTH QUARTER CORNER OF SECTION 4, TOWNSHIP 4 SOUTH, RANGE 2 WEST SALT LAKE BASE AND MERIDIAN.

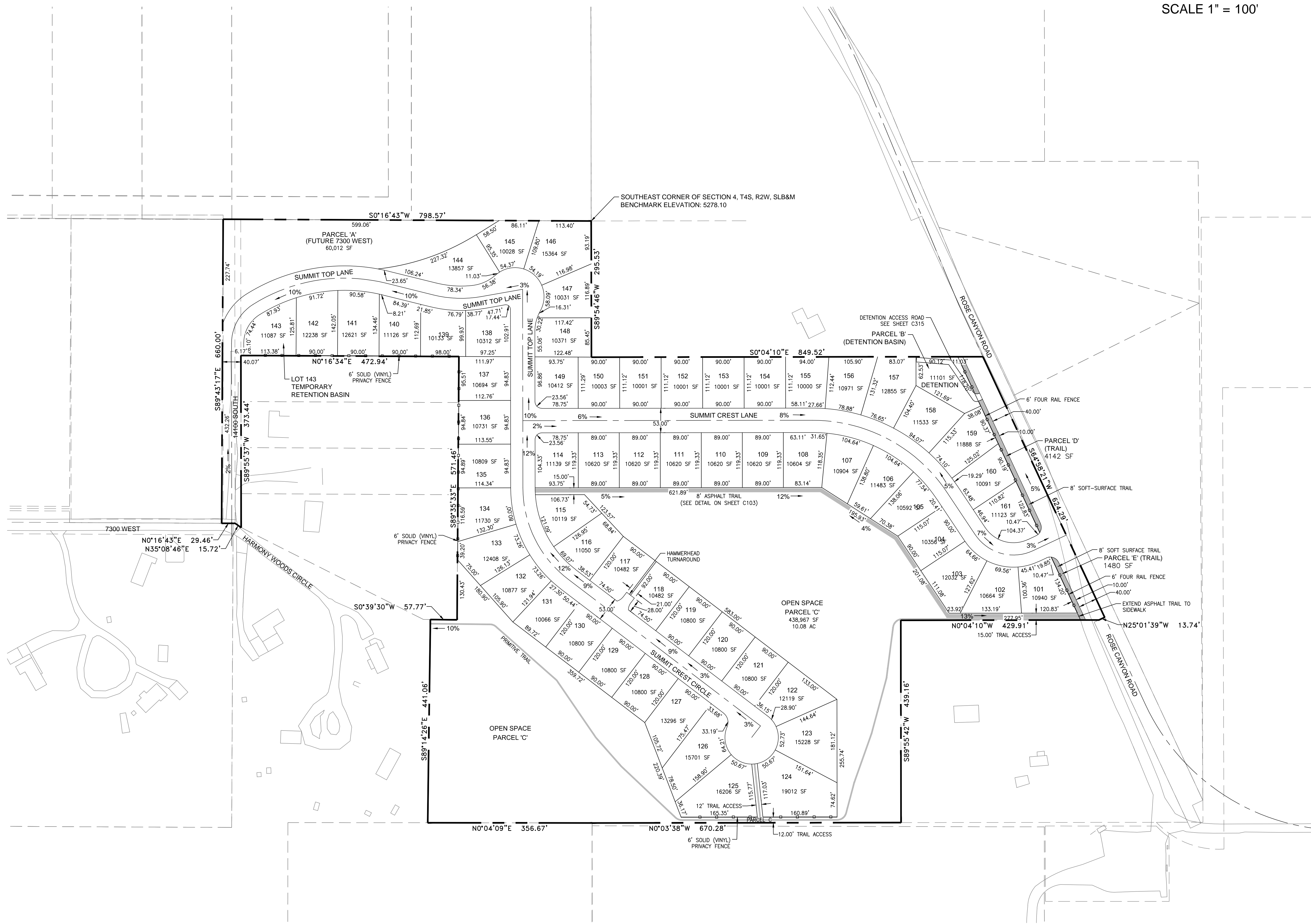
BOUNDARY DESCRIPTION:
BEGINNING AT THE SOUTHEAST CORNER OF SECTION 4, TOWNSHIP 4 SOUTH, RANGE 2 WEST, SALT LAKE BASE AND MERIDIAN; AND RUNNING THENCE SOUTH 89°54'46" WEST 295.53 FEET ALONG THE SOUTH LINE OF SECTION 4, TOWNSHIP 4 SOUTH, RANGE 2 WEST; THENCE SOUTH 00°04'10" EAST 849.52 FEET; THENCE SOUTH 64°58'21" WEST 624.29 FEET; THENCE NORTH 25°01'39" WEST 13.74 FEET; THENCE NORTH 00°04'10" WEST 429.68 FEET; THENCE SOUTH 89°55'42" WEST 439.16 FEET; THENCE NORTH 00°03'38" WEST 670.28 FEET; THENCE NORTH 00°04'09" EAST 356.67 FEET; THENCE SOUTH 89°14'26" EAST 441.06 FEET; THENCE SOUTH 00°39'30" WEST 57.77; THENCE SOUTH 89°55'33" EAST 571.46 FEET; THENCE NORTH 00°16'34" EAST 472.94 FEET; THENCE SOUTH 89°55'37" WEST 373.44 FEET; THENCE NORTH 35°08'46" EAST 15.72 FEET; THENCE NORTH 00°16'43" EAST 29.46 FEET; THENCE SOUTH 89°43'17" EAST 660.00 FEET; THENCE SOUTH 00°16'43" WEST 798.57 FEET TO THE POINT OF BEGINNING.

CONTAINS 32.8 ACRES

BOUNDARY AREA: 32.80 ACRES
NUMBER OF LOTS: 61
LOT DENSITY: 1.86 LOTS/ACRE
OPEN SPACE AREA: 10.48 ACRES
OPEN SPACE %: 31.9%

ALL PROPOSED ROAD RIGHT-OF-WAYS ARE 53' WIDE EXCEPT 14100 SOUTH AND FUTURE 7300 WEST.
ALL EXISTING STRUCTURES TO BE REMOVED
MAX ROAD GRADE: 12%
TOTAL CENTERLINE LENGTH OF CUL-DE-SAC SUMMIT CREST CIRCLE IS 900 FEET.

OPEN SPACE NOTES:
1. OPEN SPACE AREA IS TO BE LEFT UNDISTURBED EXCEPT FOR THE CONSTRUCTION OF TRAILS AS SHOWN ON THIS DRAWING.
2. EXISTING DISTURBED AREAS WITHIN OPEN SPACE TO BE RESTORED TO NATURAL CONDITION BY GRADING TO MATCH THE NATURAL SLOPE AND PLACING TOP SOIL AND SEEDING WITH NATIVE VEGETATION.
3. DETENTION BASIN AND TEMPORARY RETENTION BASIN ON LOT 143 TO BE LANDSCAPED WITH TURF SOD.



NO.	REVISION	DATE
1	NAME CHANGES, CHANGE TO GRADING	07/11/16
2	CHANGES PER CITY AND SEWER DISTRICT COMMENTS	02/03/15
3	CHANGES PER CITY AND SEWER DISTRICT COMMENTS	01/07/15
4	CHANGES PER CITY COMMENT	10/23/14
5	RELEASE TO CLIENT	09/30/14

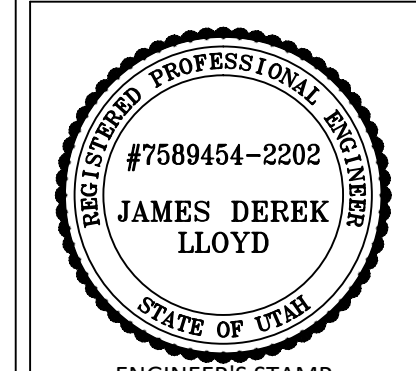
PROJECT INFORMATION

RIDGES AT ROSE CANYON

SITE PLAN

HERRIMAN, UTAH

DRAWN JDL	CHECKED DPW	PROJECT # 14071
DATE 07/11/2016		SCALE 1" = 100'
SHEET C101		ENGINEER'S STAMP



C:\DATA\14071_Rose_Hill.dwg \14071_Base.dwg
PLOT DATE: Jul 11, 2016